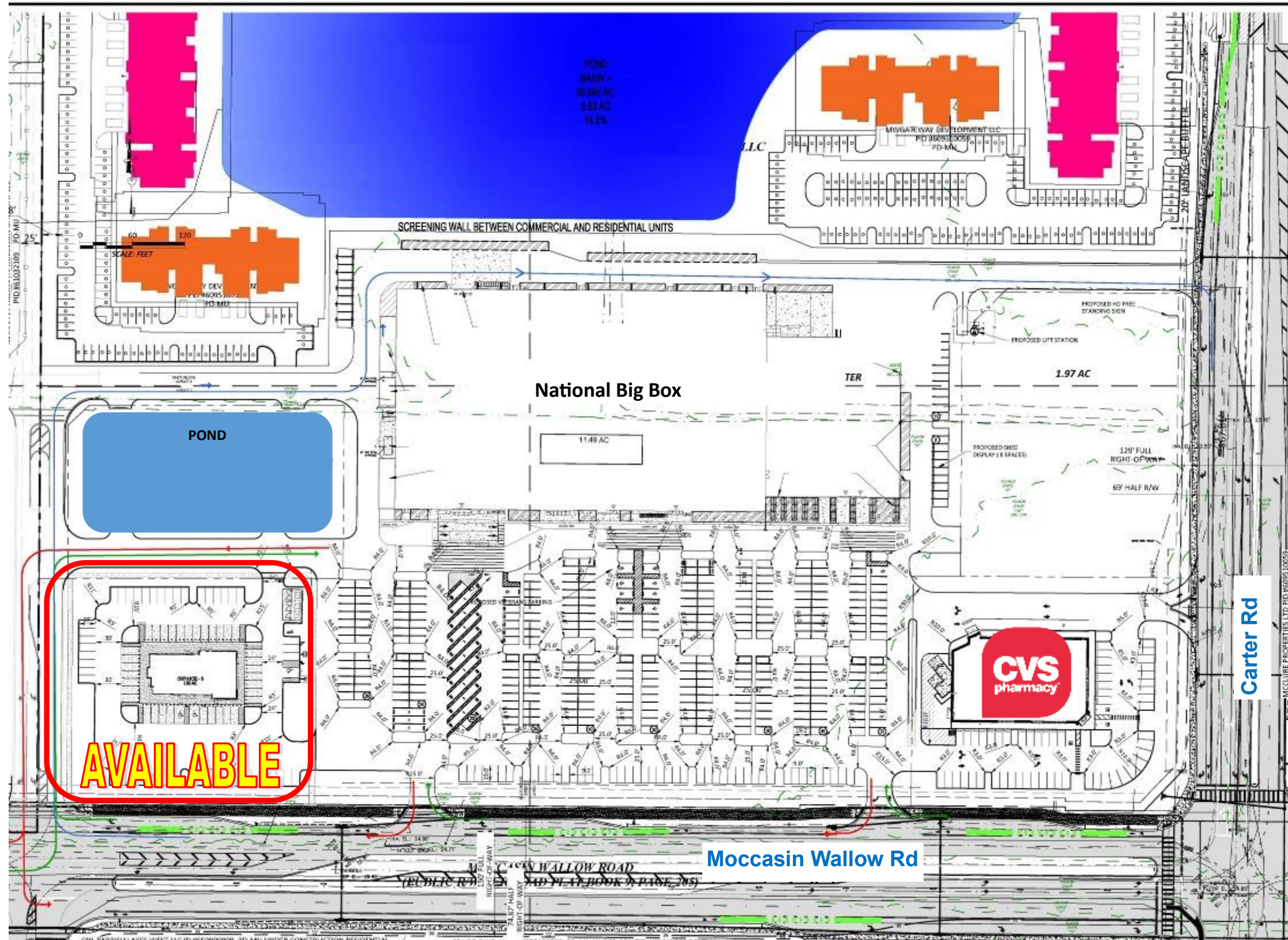
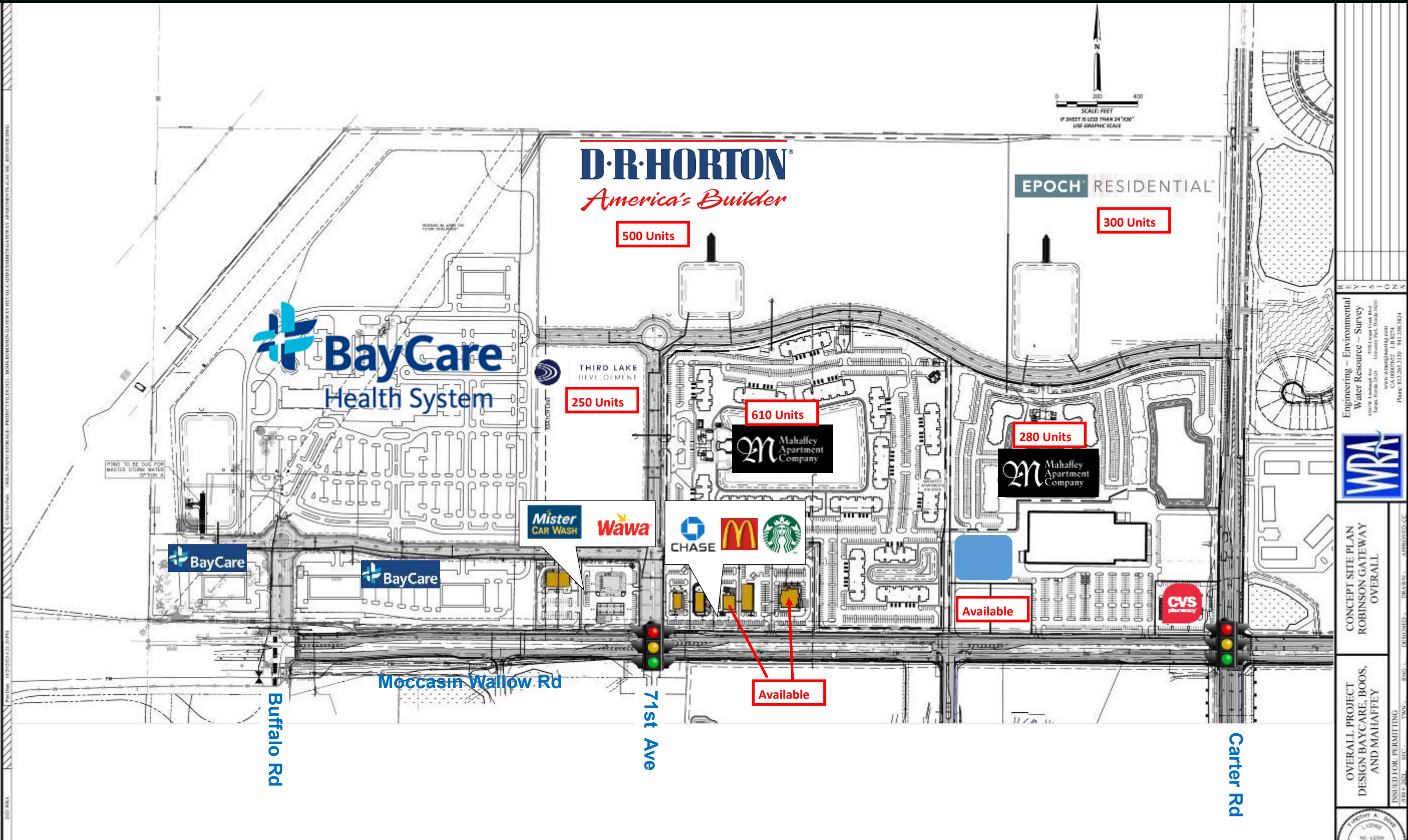


# MOCCASIN WALLOW RD & CARTER RD (AVAILABLE OUTPARCEL #3)



# BOOS TENANT MASTER PLAN



Engineering - Environmental  
Water Resource - Survey  
1000 E. Coast Road  
Tampa, Florida 33624  
www.wraengineering.com  
CA 00070452 111 8274  
Phone: 813.205.1310 411.558.3124

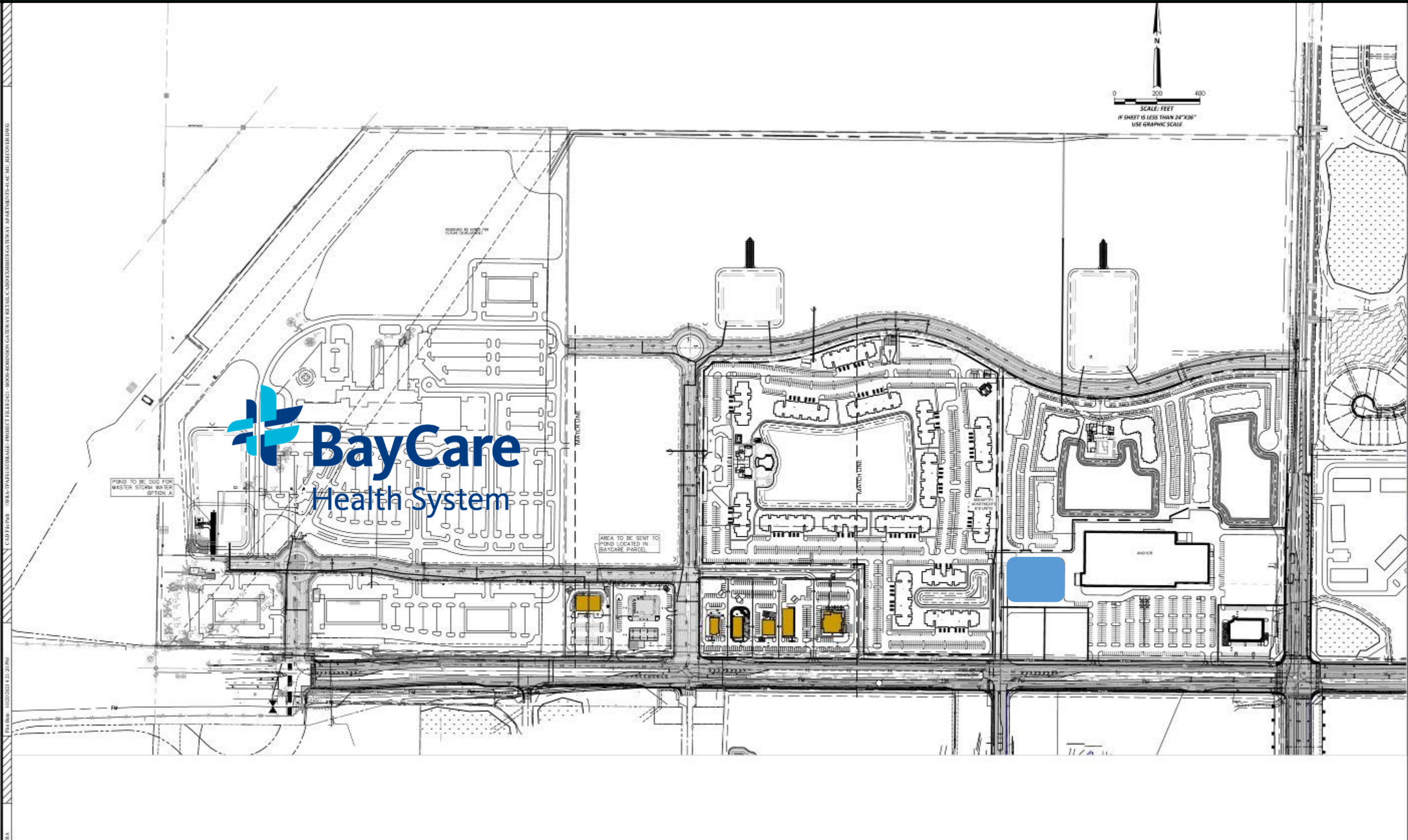


CONCEPT SITE PLAN  
ROBINSON GATEWAY  
OVERALL

OVERALL PROJECT  
DESIGN BAYCARE, BOOS,  
AND MAHAFFEY



# ROBINSON GATEWAY MASTER PLAN



**BayCare**  
Health System

REVISIONS  
Engineering - Environmental  
Water Resource - Survey  
4300 W. Leland Ave. 7th Floor, Suite 700  
Tampa, Florida 33624  
www.wraenvironmental.com  
CA 0007952 18-8274  
Phone: 813.265.3130 941.585.8324



CONCEPT SITE PLAN  
ROBINSON GATEWAY  
OVERALL

OVERALL PROJECT  
DESIGN BY BOOS, BOOS,  
AND MAHAFFEY

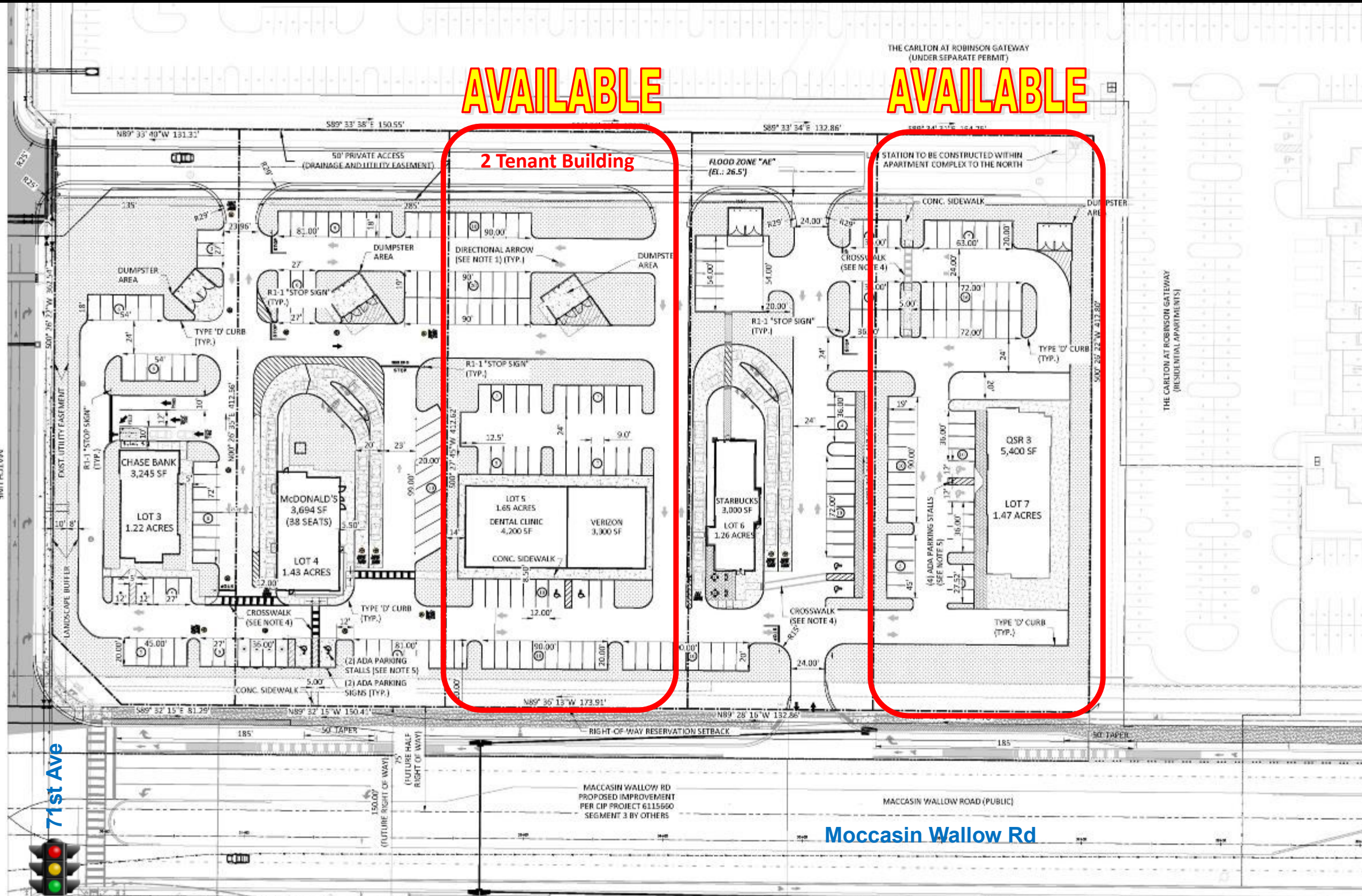
ISSUED FOR PERMITTING  
DATE: 11/20/14  
DESIGNED BY: BOOS, BOOS, AND MAHAFFEY  
DRAWN BY: AMBROSE, J.C.



REAL ESTATE CONTACT:  
1-866-421-2667  
WWW.BOOSDEVELOPMENT.COM

Jonathan Henley  
(727) 638-4487  
jhenley@boosdevelopment.com

# MOCCASIN WALLOW RD & 71ST AVE (AVAILABLE LOTS 5 & 7)



REVISION

NO.	DATE	DESCRIPTION
2	12/06/24	ADD TAPER LENGTHS TO RIGHT
3	11/05/2024	UPDATED SETL DESIGNS AND CAL

Engineering ~ Environmental  
Water Resource ~ Survey

**WRA**

PRELIMINARY SITE PLAN

BOOS DEVELOPMENT  
MOCCASIN 11 ACRES

ISSUED FOR: DRAFT REVIEW  
JOB #2411 SEC. 15

DATE: 11/05/2024  
DRAWN: MBS  
APPROVED: CRC

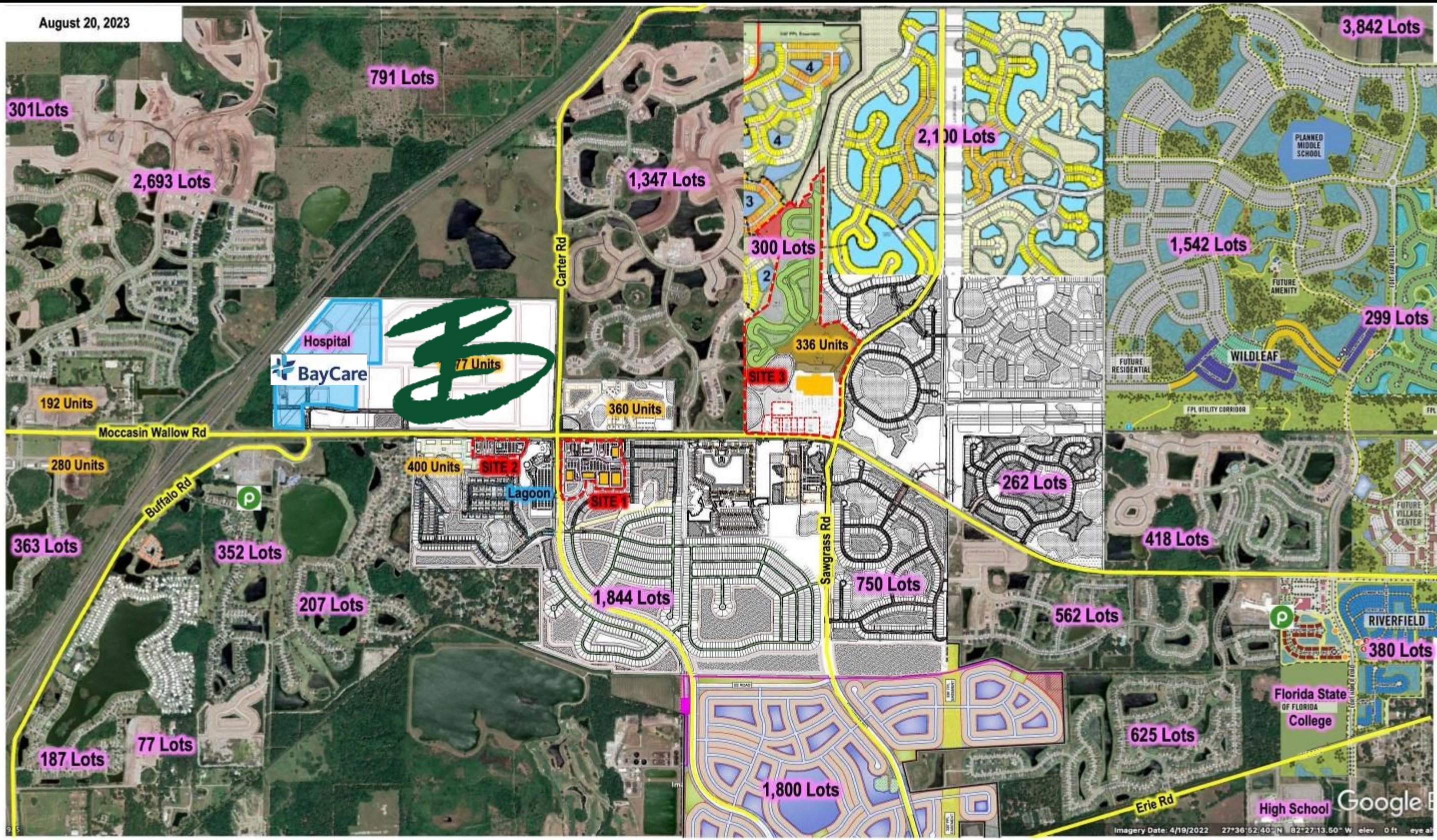
12300 Harpaze Sub Blvd.  
Tampa, FL 33624  
www.wraengineering.com  
CA 00007652 LB 8274 LA666781  
PHONE: 813.265.3130 941.275.9721



REAL ESTATE CONTACT:  
1-866-421-2667  
WWW.BOOSDEVELOPMENT.COM

Jonathan Henley  
(727) 638-4487  
jhenley@boosdevelopment.com

# MANATEE COUNTY | I-75 EAST, PALMETTO, FL

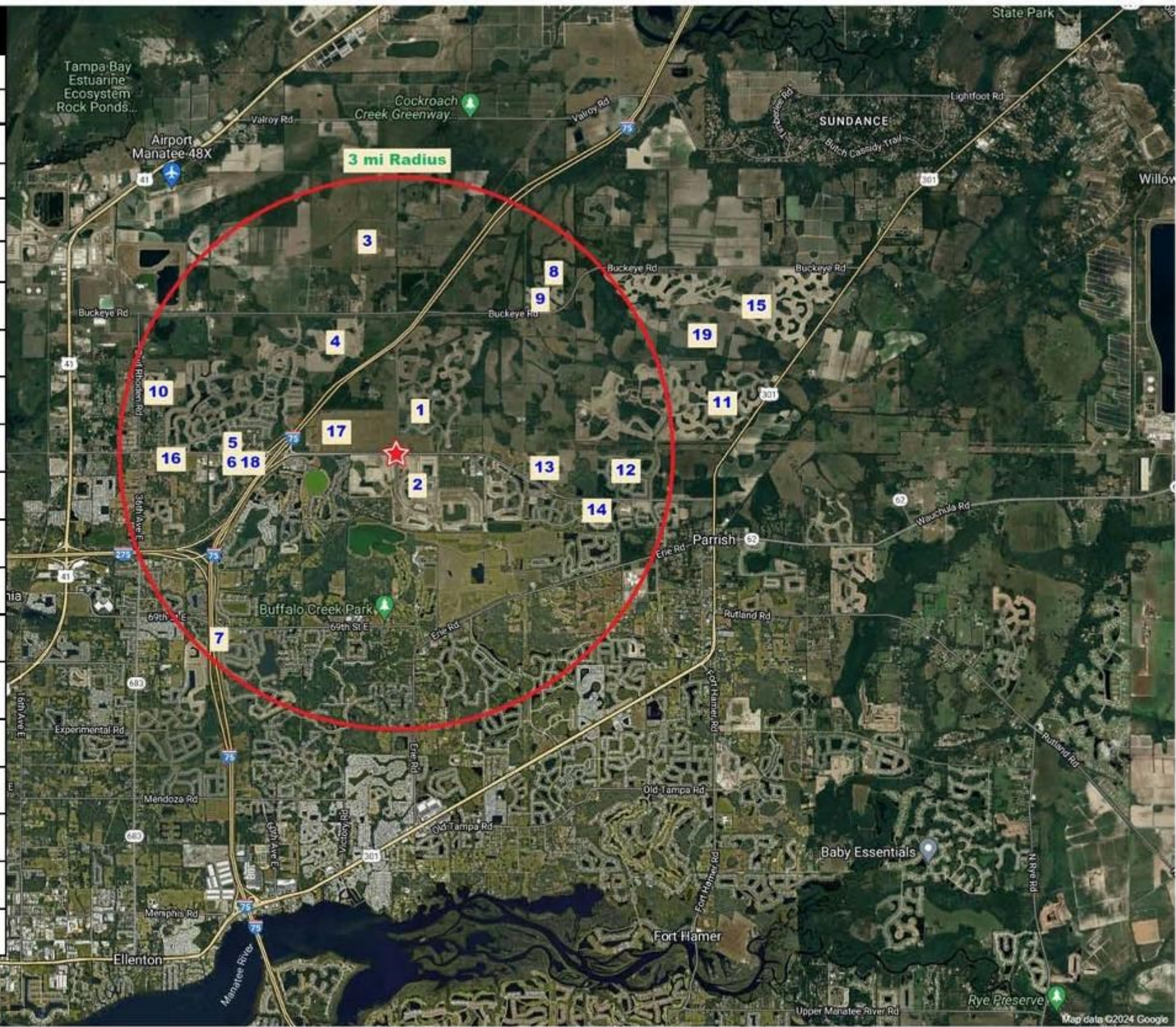


REAL ESTATE CONTACT:  
1-866-421-2667  
WWW.BOOSDEVELOPMENT.COM

Jonathan Henley  
(727) 638-4487 cell  
jhenley@boosdevelopment.com

# MOCCASIN WALLOW PALMETTO | NEW HOUSING DEVELOPMENTS

Map	Developments	Units
1	Dell Webb Bayview	1,347
2	Seaire	3,000
3	Newport Isles	3,382
4	Artisan Lakes	2,500
5	Yardly Artisan Lakes	192
6	Gateway Commons	280
7	Trevesta Place	256
8	Oakfield Trails	2,600
9	Oakfield Lakes	2,000
10	Mandarin Grove	298
11	Bella Lago	1,198
12	North River Ranch	6,000
13	Sawgrass Lakes	262
14	The Summerwoods	750
15	Prosperity Lakes Active Adult	2,100
16	MI Homes	524
17	Mahaffey Apts	622
18	Apartments	304
19	Haval Farms	3,842
	<b>TOTALS</b>	<b>31,457</b>



REAL ESTATE CONTACT:  
 1-866-421-2667  
 WWW.BOOSDEVELOPMENT.COM

Jonathan Henley  
 (727) 638-4487 cell  
 jhenley@boosdevelopment.com